



The essence of the Casa Rojo was to create a space which would exemplify the feeling of well being and tranquility. This is a place where one can work, play or socialize without disturbing the harmony of the different elements that is encompassed within this space.

The planning concept is based on blending traditional and contemporary elements to create a style that is timeless. Equal importance is given to the climatic comfort, cost effectiveness, eco friendliness and sustainability.

Quality of space has been organized as per the varying moods. The open plan has been organized using various elements to create and maintain the quality of spaces. The building has been created in such a way to create a sequence, which begins with the entrance and the most public parts of the building that then leads into a large rear verandah that allows for a lot of breeze and eternally cools the interiors.

The verandah also doubles up as a living area where the clients spend most of their time relaxing. The transition between the inside and outside of the building is gradual, and one gets the feeling of being partly inside, yet still feels connected to the outside.

The roof is a predominant feature in the elevation. The roof is built in such a way that it looks different from every elevation. The double layer roof ensures that the blazing sun in Chennai does not affect the temperature within the house.

The antique furniture used blends perfectly with stone coloured floors, brilliant yet subtle furnishing, carpets and creative lighting.

Various elements such as Stabilized Compressed Earth Blocks, vitrified floor tiles, timber columns made of Malaysian Sal have been used in the design to achieve cost effectiveness and to create and maintain the quality of spaces. The plan has been organized to break the rigidity of city life and this lends it a very private and sheltered feeling.

A landscape of indigenous plants, wild grass and stone sculptures is used that is easy to maintain and beautiful to look at and live in. In this house, the backyard is a major design feature which when combined with the pond gives it a feel of serenity and comfort.

## 48 | VEDIKA ARCHITECTS

Casa Rojo | Panaiyur, ECR, Chennai

**FIRM NAME**  
Vedika Architects

**PRINCIPAL ARCHITECT**  
Benny Kuriakose

**EDUCATION / AFFILIATION**  
MA Conservation Studies, University of York, United Kingdom  
Ph.D from Indian Institute of Technology, Madras

**TEAM SIZE**  
5 people

**CONTACT**  
Flat F, Third Floor, Springwood Apartments,  
6, Ranjith Rd, Kotturpuram,  
Chennai, Tamil Nadu - 600085.

T: +91 44 24471172 | +91 44 24474794  
E: benny@bennykuriakose.com





IT WAS AN OLD ORCHARD WITH PLENTY OF MANGO AND OTHER FRUIT TREES. THE ESSENCE OF THE BUILDING WAS TO BE A SPACE WHICH WOULD EXEMPLIFY THE FEELING OF WELL-BEING AND TRANQUILITY. IT WAS TO BE A PLACE WHERE ONE COULD WORK, PLAY OR SOCIALIZE WITHOUT DISTURBING THE HARMONY OF THE DIFFERENT ELEMENTS ENCOMPASSED WITHIN THIS SPACE.



CASA ROJO  
PANAIYUR, ECR, CHENNAI

BUILT UP AREA  
4,833 SQ. FT.





- 01 | Front Porch - Front elevation of the building.
- 02 | Entrance passage.
- 03 | Courtyard.
- 04 | Bedroom in the ground floor.
- 05 | Walls built with stabilized compressed earth blocks.







07

06 | Living room.  
07 | Rear elevation of the building with the lily pond in the foreground.





08 | Driveway to the porch.





### THE HIGHLIGHT

Dining room.  
Staircase with timber planks and  
mexican tiles.



09 | The roof is a predominant feature in the elevation.



## MATERIAL BOARD



01 Malasian Timber  
02 Ceramic Tiles  
03 Stabilized Concrete Earth Blocks  
04 Gravel

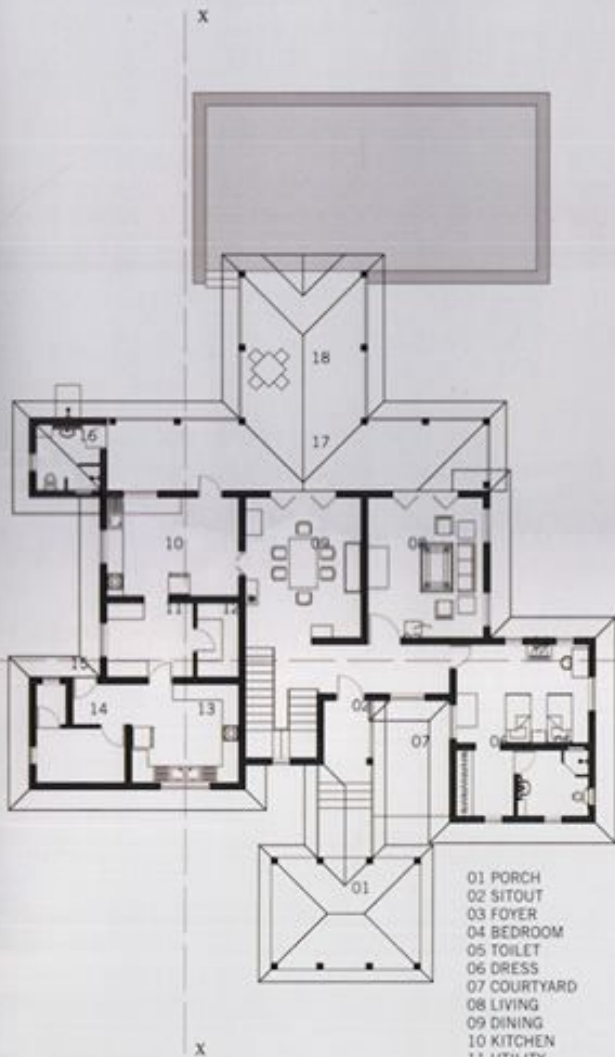
05 Stabilized Concrete Earth Blocks  
06 Mangalore Tiles  
07 Rough Granite  
08 Brick Paving

### CHALLENGES

One of the major challenges was to make the earth blocks. We have added fly ash and cement to stabilise the earth and to get a better compressive strength. The bricks were made in a concrete block making machine and the problem was the breakage of the blocks during the transport. Also it was quite a challenge to get good workmanship in the masonry work since it was exposed. Also it was quite difficult with the good quality carpentry work with the roofs and joinery.

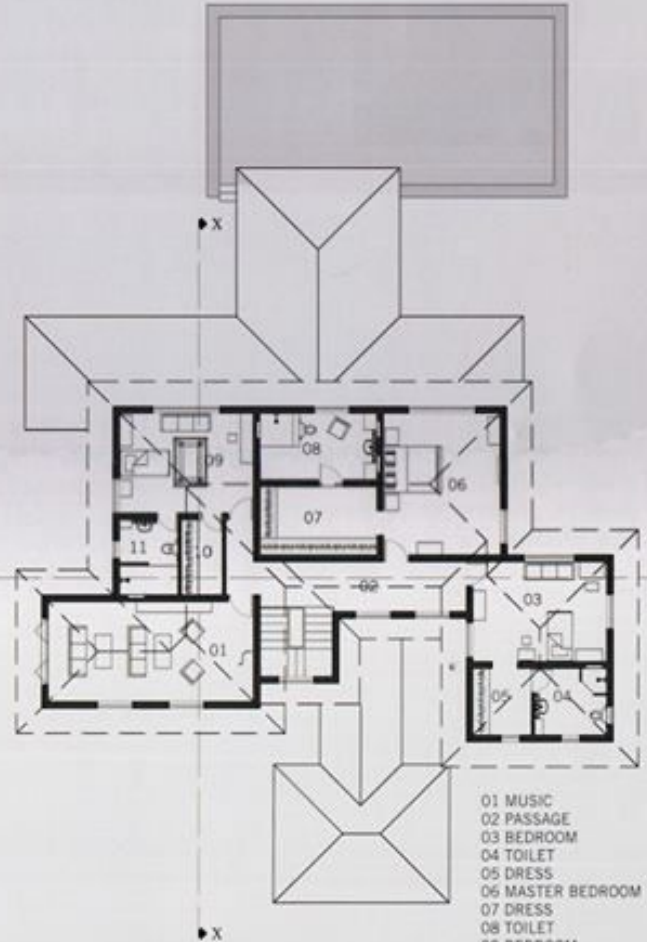
### INSPIRATION

Casa Rojo do not follow any particular style and it is a mixture of many styles. We wanted the house to be contemporary, thermally very comfortable and at the same time respond to the local climate and the clients' brief.



- 01 PORCH
- 02 SITOUT
- 03 FOYER
- 04 BEDROOM
- 05 TOILET
- 06 DRESS
- 07 COURTYARD
- 08 LIVING
- 09 DINING
- 10 KITCHEN
- 11 UTILITY
- 12 STORE
- 13 WORK AREA
- 14 SERVANT'S ROOM
- 15 TOILET
- 16 TOILET
- 17 VERANDAH
- 18 SITOUT

GROUND FLOOR PLAN



- 01 MUSIC
- 02 PASSAGE
- 03 BEDROOM
- 04 TOILET
- 05 DRESS
- 06 MASTER BEDROOM
- 07 DRESS
- 08 TOILET
- 09 BEDROOM
- 10 DRESS
- 11 TOILET

FIRST FLOOR PLAN

#### CONSULTANTS / CONTRACTORS

Structural Consultant: Alex Jacob  
Civil Contractor: Thomas Kallarackal  
Landscape: Client