



49 | VEDIKA ARCHITECTS

The Wayanad House | Wayanad, Kerala

FIRM NAME

Vedika Architects

PRINCIPAL ARCHITECT

Benny Kuriakose

EDUCATION / AFFILIATION

MA Conservation Studies, University of York, United Kingdom
Ph.D from Indian Institute of Technology, Madras

TEAM SIZE

5 people

CONTACT

Flat F, Third Floor, Springwood Apartments,
6, Ranjith Rd, Kotturpuram,
Chennai, Tamil Nadu - 600085,

T: +91 44 24471172 | +91 44 24474794
E: benny@bennykuriakose.com

The concept for the design originated from the expansive views afforded from the site and accordingly, the spaces were designed. The first design decision was to raise the structure on stilts, allowing for the views to be framed and distinctive. The primary choice of material was timber. In order to integrate the views of the lush landscape and the hills beyond, glass needed to be used, a material not extensively used in a traditional construction. The assimilation of glass and timber into the construction added a contemporary element to the project.

The front façade showcases predominant use of brick masonry, masking the actual reality, within the doors. It is a stark contrast to the living/dining space which is encompassed in light with tall, timber-framed glass windows and minimal use of brick walls. The ground floor has an open plan consisting of a living/dining room attached to an open kitchen. The stairs, ceiling, roof and the mezzanine floor are finished with timber.

The initial scheme of the building however, had only timber frames supporting the glass panels, which proved to be a challenge during its construction, where the necessary compromise of using concrete columns in the corners was employed.

The varying heights encompassed within the spaces were incorporated as an aesthetic element, such as the hall which has a double height ceiling as opposed to the other spaces which are of lesser ceiling heights.

Local species of timber were used for the rafters in the roof as they were far more durable and stronger than teak, available at one-third the price of teak. The woodwork employed use of traditional timber joinery techniques without the use of steel bolts, connectors or sections.

The Wayanad house stands testimony to the perfect balance achieved by an amalgamation of traditional and contemporary elements which co-exist as a cohesive whole, complementing one another.



THE WAYANAD HOUSE STANDS TESTIMONY TO THE PERFECT BALANCE ACHIEVED BY AN AMALGAMATION OF TRADITIONAL AND CONTEMPORARY ELEMENTS WHICH CO-EXIST AS A COHESIVE WHOLE, COMPLEMENTING ONE ANOTHER. THE VIEWS FROM AN ELEVATED POINT OF THE COFFEE ESTATE WERE FULLY CAPTURED IN THE DESIGN OF THE HOUSE.

01

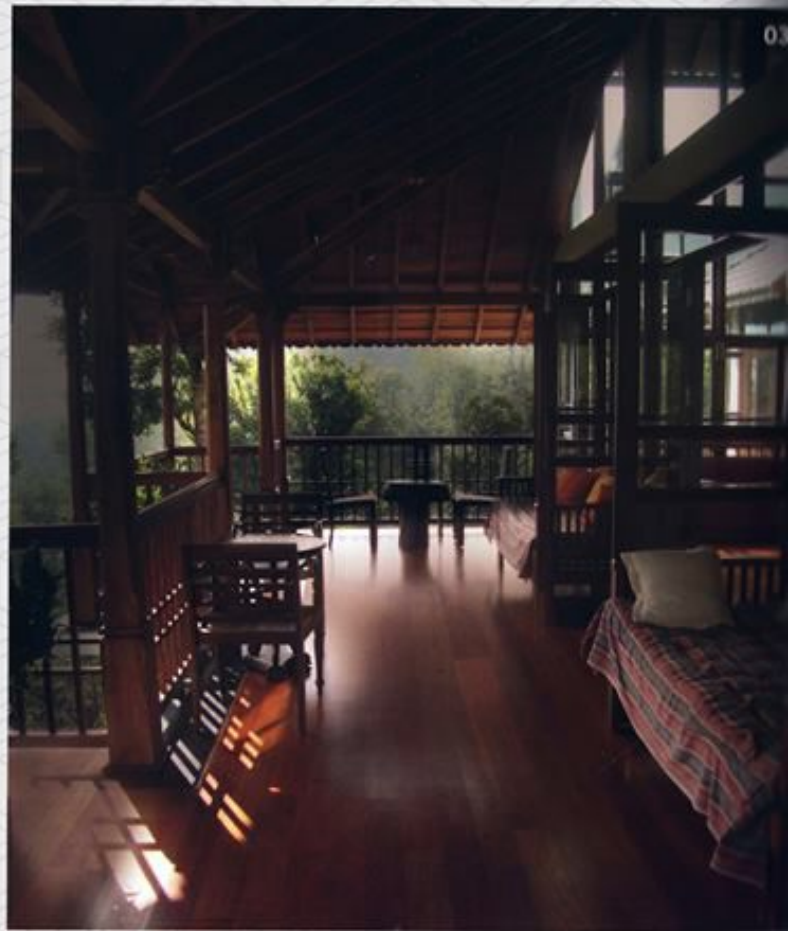


THE WAYANAD HOUSE
KERALA

BUILT UP AREA
2,045 SQ. FT.



- 01 | Front Elevation of the house.
- 02 | View from the Foyer towards the outside.
- 03 | Verandah overlooking the Mountains.
- 04 | Living room with large glass windows.





05 | Verandah overlooking the Mountains.



06 | Sitout of one of the Bedrooms.



07 | Timber-framed glass windows.



THE HIGHLIGHT

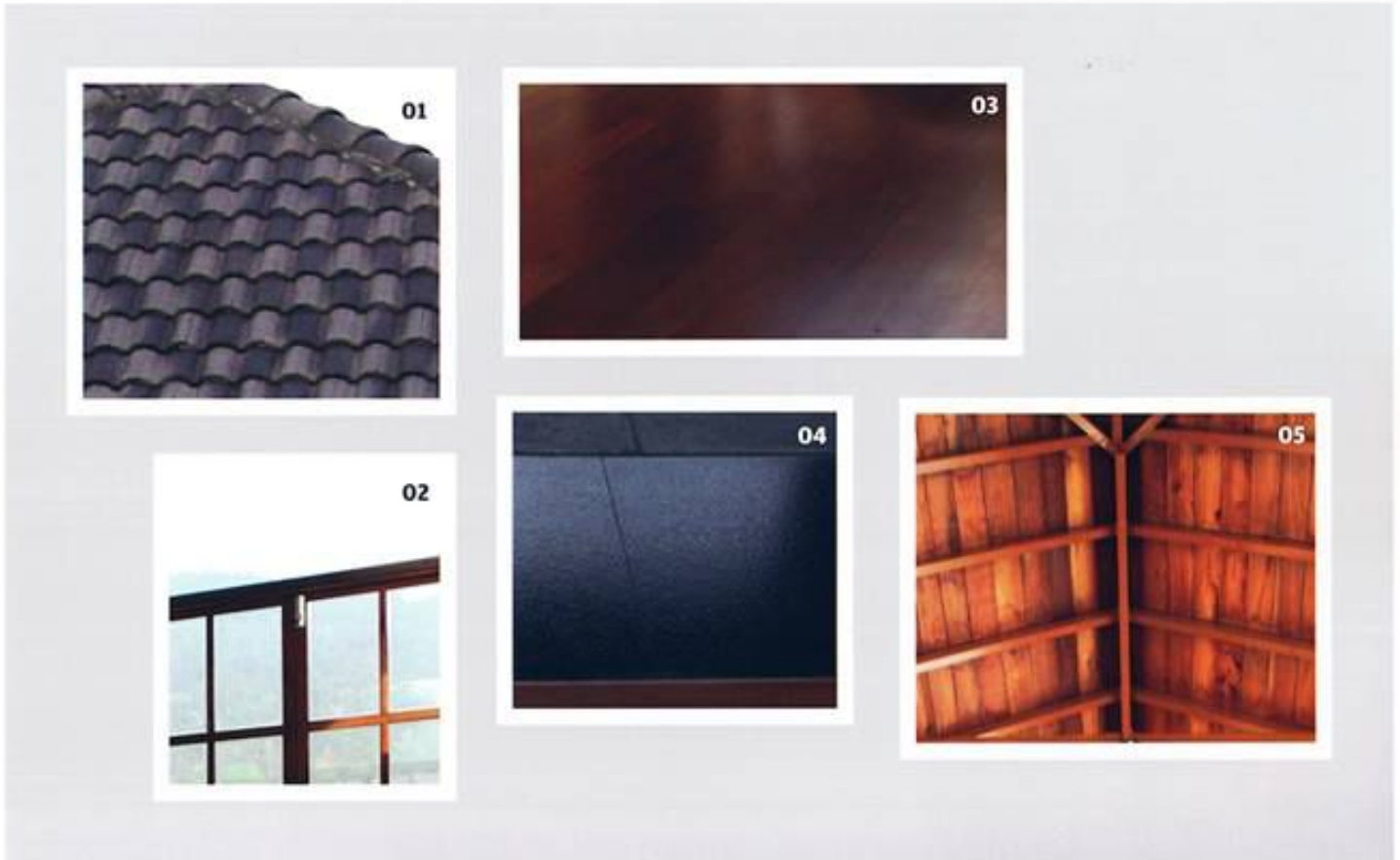
Sit out of one of the Bedrooms with large french windows giving a scenic view of the Western Ghats.



08

08 | The stairs, ceiling and the mezzanine floor are finished with timber.

MATERIAL BOARD



- 01 Monier Roof Tiles
- 02 Glass
- 03 Timber Floor
- 04 Leather Finish Granite
- 05 Timber Roof

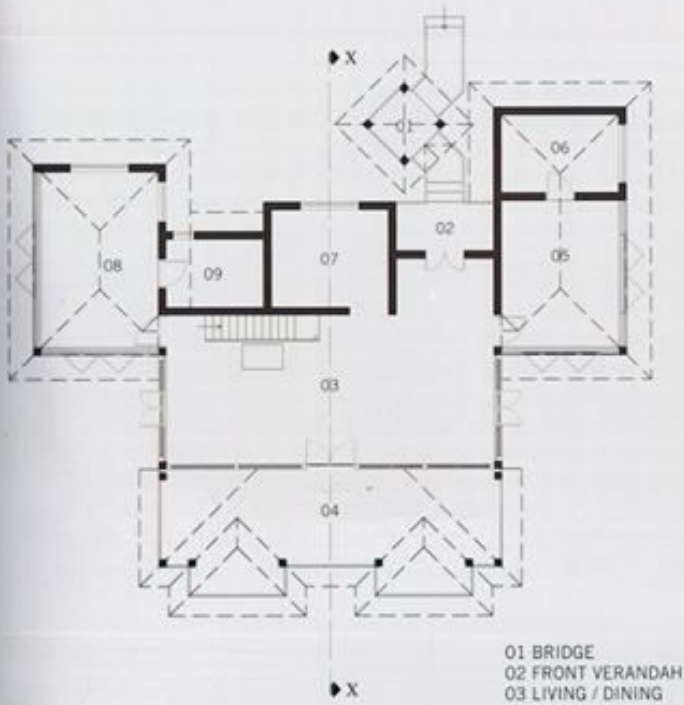
CHALLENGES

The difficulty was to source the timber for the house, since expensive timber such as teak etc. were not used. Local species of timber were used for the rafters in the roof as they were far more durable and stronger than teak, available at one-third the price of teak. The woodwork employed use of traditional timber joinery techniques without the use of steel bolts, connectors or sections.

Another hardship was to build the house in a remote place in the western ghats. It was quite difficult to ensure the good craftsmanship which is required for a project of this nature.

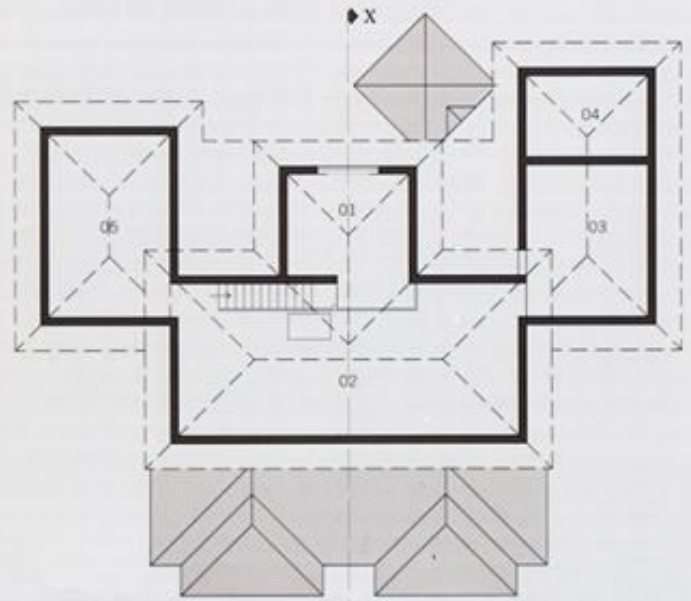
INSPIRATION

The idea was to capture the view of the western ghats and at the same time ensure the privacy. Considering the location where the climate is a bit more cold because of the high altitude of the place, glass and timbere were used in a contemporary way.



GROUND FLOOR PLAN

- 01 BRIDGE
- 02 FRONT VERANDAH
- 03 LIVING / DINING
- 04 REAR VERANDAH
- 05 BEDROOM
- 06 TOILET
- 07 KITCHEN
- 08 BEDROOM
- 09 TOILET



MEZZANINE FLOOR PLAN

- 01 MEZANINE
- 02 LIVING / DINING BELOW
- 03 BEDROOM BELOW
- 04 TOILET BELOW
- 05 BATHROOM BELOW

CONSULTANTS / CONTRACTORS

Structural Consultant: Mr. Alex Jacob, Chennai
Civil: Srikanth
Landscape: Client